

AIDE INFO BOARD

Volume 2, issue 1

ISSN 2599-3739

January 2018

AIDE adopts EDUTECH

The role of technology in the teaching-learning process has long been recognized to be very important in aiding the delivery of instruction even before distance education system came as an alternative mode of education.

In pursuance of the law on Open/Distance Learning of the Philippines, AIDE endeavors to adopt, as part of its delivery, a computer-aided instruction through the use of Learner Management System (LMS).

Last month, three (3) vendors submitted their proposal to AIDE and the institute's officials are still doing sensitivity analysis and careful assessment of all the features, benefits and costings. The usability and costs are not the only determining factor to decide which LMS provider will be considered but

*“Technology will
never replace
great teachers,
but technology in
the hands of great
teachers is trans-
formational...”*

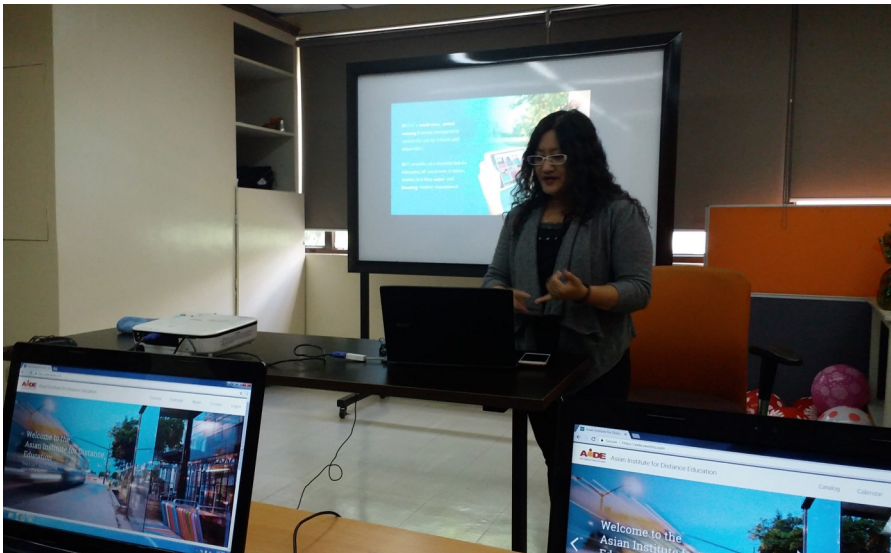
- George Couros



Photo Credits: NEO Cypher Learning presentation

In This Issue

- AIDE adopts
- LMS Provider presents proposal to AIDE
- Learning the ropes of LMS
- AIDE History (Part of a series)



Country Representative of NEO Cypher Learning Philippines,

AIDE adopts EDUTECH

From page 1

also the one the would suit the needs of the students in terms of navigation, ease of use and application and friendliness. Given the exposure of the students to computers, social networking sites and a lot of apps, there is really a need to

See Page 4

LMS provider presents proposal to AIDE

The officials and staffs of NEO Cypher Learning along with its partner institution—the Experts Academy have made presentations on the features of their proposed Learning Management System last December 2017 to the AIDE management and staffs.

They stated that their learning platform is a world class, award winning learning management system for use by schools and universities. They added that NEO provides an e-learning hub for managing all classroom activities, making teaching easier and boosting student engagement.

The major features of their LMS was also presented which according to them has the following:

- Intuitive design
- Innovative features
- Cloud-based architecture
- Affordable subscription
- Extensive, multi-channel support
- Availability in Android and IOS

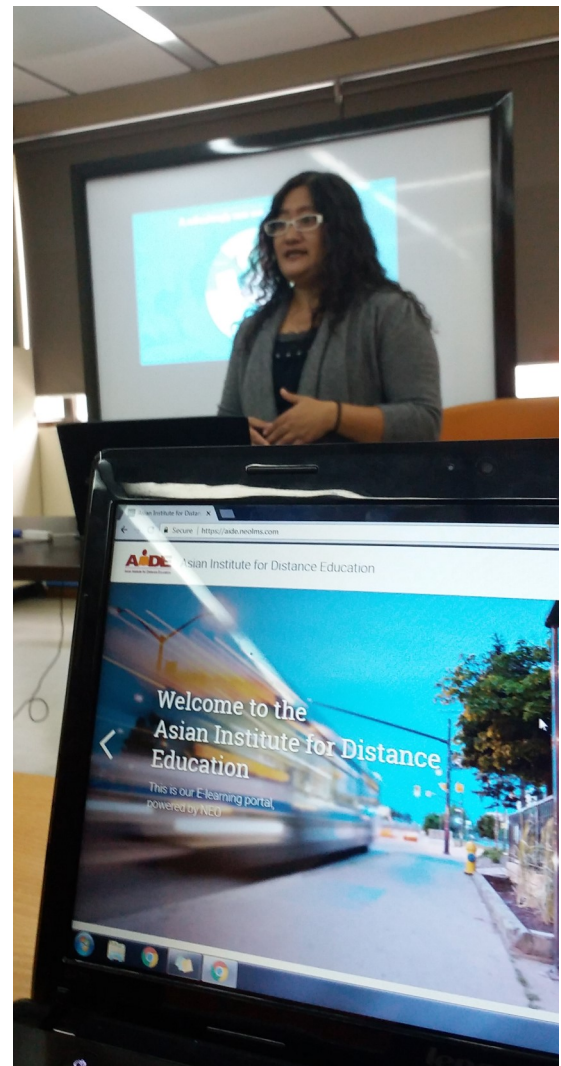


Photo Caption

Do you know that?

The Acting President, at that time, Mr. Panteleon was assisted by Orendain as Vice President and Drs. Concesa Baduel, Felicidad Robles and Narciso Robles as consultants.

In the early 90's, AIDE happened to house at the 4th Floor of the Makati Stock Exchange Building in Ayala Avenue. During those times, Dr. Gloria Manalang - Angara served as its President, assisted by Lourdes Castillo as Executive Director.

Today, AIDE's management composes of: its President, Antonio O. Cojuangco, Mr. Arturo B Diago Jr, as its Senior Vice President, Dr. Ramon C.I. Nivera as its Senior Adviser and Ms. Zenaida L. Villaescusa as Executive Director.

Part 6 of a series



The staffs of AIDE while intently listening to Presentation about LMS

Learning the ropes of LMS

According to talentlms.com (2018) LMS stands for Learning Management System.

L- LEARNING because It is use to deliver education courses or training programs.

M—MANAGEMENT because it helps institutions to organize their courses (create them, change them, assign them to students, grade them, etc).

S- SYSTEM as it is run by software and computer program in general.

An LMS is a software program that helps you create, manage and deliver e-Learning courses. It is an engine that powers eLearning, and in the most common form it consist of two separate parts:

- (1) A server component that performs the core functionality (creating, managing and delivering courses, authenticating users, serving data and notifications, etc.)
- (2) A user interface that runs inside a browser as a web that is used by administrators, instructors and students.

See page 4

What is the other term for distance education???

Distance education is also used interchangeably as **CROSS BORDER EDUCATION** which is defined by CHED as “all types of higher education study programs, or sets of courses of study, or educational services (including those of distance education) in which the learners are located in a country different from the one where the awarding institution is based.” Such programs may belong to the education system of a State different from the State in which it operates, or may operate independently of any national education. (*CHED Memo on Internationalization of Philippine Higher Education s. 2015 taken from UNESCO Council of Europe Code of Good Practice in the Provision of Transnational Education [Riga, 6 June 2001]*)



Photo credits: NEO CYPHER Learning

AIDE INC. INFO BOARD

Editorial Board

Mrs. Zenaida Villaescusa

Editor-In-Chief

Ms. Marichu B. Ebdani

Ms. Susan B. Sanders

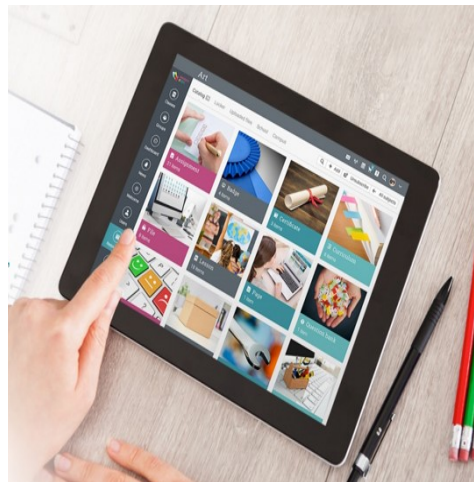
Ms. Juvy C. Bangued,

Editorial Staffs

AIDE Adopts EDUTECH

From page 2

to provide alternative means of educational delivery that that is acceptable and enjoyable to our students so that they the essence of making learning as a fun experience will be put into reality.



Learning the ropes of LMS

From page 3

Series of presentations were made to make the AIDE staffs competent in the use of Learner Management System.

The Capability Building workshop was first held at the AIDE Office at 3/F Greebelt Mansion in December 2017 and follow through hands-on seminar was made in January 2018. The most recent one was held at Experts Academy.

Ms. Marichu Ebdani, Ms. Susan Sanders and Ms. Juvy Bangued attended the said capability building workshop.